

## Roxtec Cable and Pipe Transits

<b>Introduction</b> .....	<b>2</b>
<b>RM Modules</b> .....	<b>4</b>
MultiDiameter modules with core .....	4
MultiDiameter modules without core .....	4
Solid compensation modules .....	4
<b>Wedge and Stay Plate</b> .....	<b>5</b>
Wedge kit/parts and stayplate, galvanized .....	5
Wedge kit/parts and stayplate, stainless steel .....	5
Roxtec Lubricant .....	5
<b>S Frames for welding</b> .....	<b>6</b>
S frame, primed mild steel .....	6
S frame, acid proof stainless steel .....	7
<b>SF Frames for welding</b> .....	<b>8</b>
SF frame, primed mild steel .....	8
SF frame, acid proof stainless steel .....	8
<b>GHM Frames for bolting</b> .....	<b>9</b>
GHM frame, primed mild steel .....	9
Roxtec KFO Frame .....	9
<b>R Frames</b> .....	<b>10</b>
R frame, galvanized fittings .....	10
R frame, acid proof stainless steel .....	10
<b>RS sealing</b> .....	<b>11</b>
RS seal, with core, acid proof stainless steel fittings .....	11
RS seal, without core, acid proof stainless steel fittings .....	11
RS OMD seal, with core, acid proof stainless steel fittings .....	11
<b>Sleeves</b> .....	<b>12</b>
Sleeves, without flange .....	12
Sleeves, with flange .....	12
<b>Roxtec Ezentry</b> .....	<b>13</b>
<b>Installation/ Disassembly tools</b> .....	<b>14</b>
Pre-compression tools .....	14
Stayplate clip .....	14

## Introduction



Roxtec's sealing system has been tested and approved for use in constructions onshore and offshore, to protect people and investments.

Our Roxtec cable and pipe transits help to ensure operational reliability by protecting from hazards induced by water pressure, fire, jet-fire and gas, and by minimizing the risk for explosions. In addition, a special EMC version can be used to prevent electromagnetic disturbances from interfering with equipment.

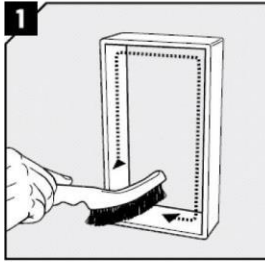
### Solutions

- Offshore rigs
- Offshore vessels
- Ships
- Industrial plants
- Machines and equipment
- Power plants

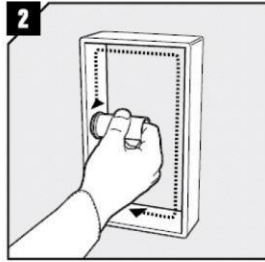
### ATEX Approval

Approved by: ABS, Bureau Veritas, US Navy, CSA, United States Coast Guard, Germanischer Lloyd, DNV, RINA, Transport Canada.

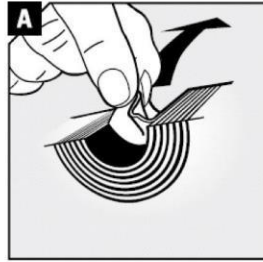
**Installation**



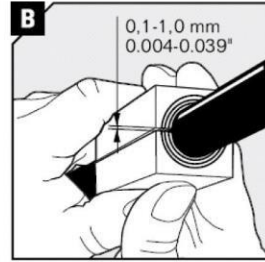
Remove any dirt inside the frame.



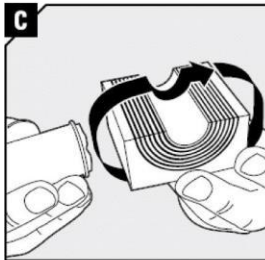
Lubricate the inside surfaces of the frame with Roxtec Lubricant, especially into the corners.



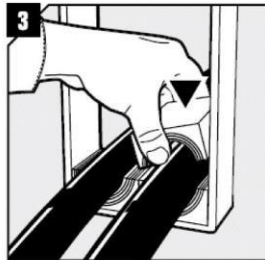
Adapt modules which are to hold cables or pipes by peeling layers until you reach the gap seen in pic. B.



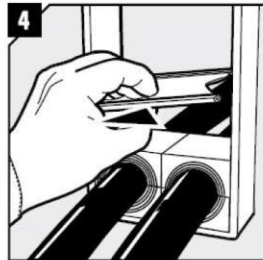
Achieve a 0.1-1.0 mm gap between the two halves when held against the cable/pipe.



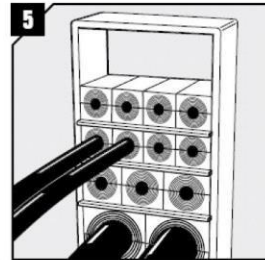
Lubricate all modules for the frame thoroughly, both the inside and the outside surfaces.



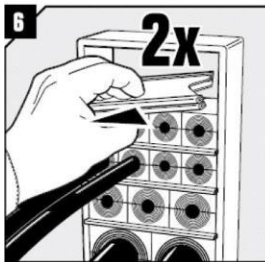
Insert the modules according to your installation plan (transit plan). Usually start with the largest modules.



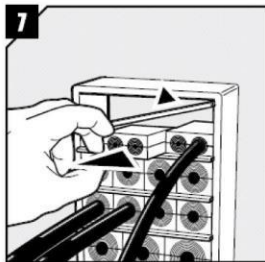
Insert a stayplate on top of the finished row of modules.



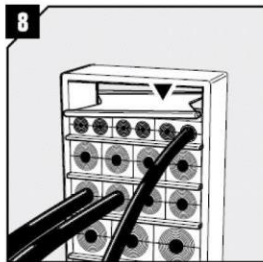
Continue to fill up the packing space of the frame, until one final row is left. See pictures "Packing space" for the full size of the space.



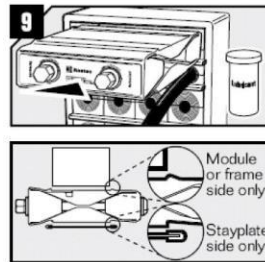
Before inserting the final row of modules, insert two stayplates.



Separate the two stayplates and insert the final row of modules between the stayplates.



Drop the upper stayplate on top of the modules.



Lubricate all sides of the wedge sparsely, except front and back. Please read the markings on the wedge and turn it correctly before inserting it in the top of the frame (standard position). Face with "Stayplate this side" must always face a stayplate.

## RM Modules



### MultiDiameter modules with core

Manufacturer's part number	Description	Cable dimensions	Order Code
RM00100151000	RM 15	0 - 3.0 - 11.0	8002082
RM00115401000	RM 15w40	0 - 3.5 - 10.5	8002451
RM00100201000	RM 20	0 - 4.0 - 14.5	8002376
RM00120401000	RM 20w40	0 - 3.5 - 16.5	8001642
RM00100301000	RM 30	0 - 10.5 - 25.0	8002377
RM00100401000	RM 40	0 - 21.5 - 34.5	8002378
RM00140101000	RM 40 10-32	0 - 9.5 - 32.5	8002347
RM00100601000	RM 60	0 - 28.0 - 54.0	8002348
RM00160201000	RM 60 24-54	0 - 24.0 - 54.0	8003573
RM00100901000	RM 90	0 - 48.0 - 71.0	8002242
RM00101201000	RM 120	0 - 67.5 - 99.0	8002243



### MultiDiameter modules without core

Manufacturer's part number	Description	Cable dimensions	Order Code
RM00000601000	RM 60 woc	28.0 - 54.0	8066241
RM00000901000	RM 90 woc	48.0 - 71.0	8068652
RM00001201000	RM 120 woc	67.5 - 99.0	8061339



### Solid compensation modules

Manufacturer's part number	Description	Order Code
RM00305241000	RM 5/0x24	8002494
RM00310121000	RM 10/0x12	8001361
RM00300151000	RM 15/0	8002495
RM00300201000	RM 20/0	8001622
RM00300301000	RM 30/0	8002244
RM00300401000	RM 40/0	8002245
RM00300601000	RM 60/0	8002442

## Wedge and Stay Plate



### Wedge kit/parts and stayplate, galvanized

Manufacturer's part number	Description	Order Code
AWK0001201018	Kit galv -1 x Wedge 120mm, 5xstayplate 120mm and 1 x lubricant	<b>8002467</b>
ARW0001201018	Wedge 120mm galv	<b>8002455</b>
ASP0001200018	Stayplate 120mm galv	<b>8002456</b>



### Wedge kit/parts and stayplate, stainless steel

Manufacturer's part number	Description	Order Code
AWK0001201021	Kit AISI 316 - 1 x Wedge 120mm, 5 x stay- plate 120mm og 1 x lubricant	<b>8001575</b>
ARW0001201021	Wedge 120mm AISI 316	<b>8002443</b>
ASP0001200021	Stayplate 120mm AISI 316	<b>8002457</b>



### Roxtec Lubricant

Manufacturer's part number	Description	Order Code
ALT0000003000	Lubricant 25 ml	<b>8001623</b>

## S Frames for welding



### S frame, primed mild steel

Manufacturer's part number	Description	Order Code
SS01000000112	S 1x1 primed	on request
S002000000112	S 2x1 primed	<b>8002352</b>
S002000000212	S 2x2 primed	on request
S002000000312	S 2x3 primed	on request
S002000000412	S 2x4 primed	on request
S002000000512	S 2x5 primed	on request
S002000000612	S 2x6 primed	on request
SS03000000112	S 3x1 primed	on request
S004000000112	S 4x1 primed	<b>8002453</b>
S004000000212	S 4x2 primed	<b>8002458</b>
S004000000312	S 4x3 primed	on request
S004000000412	S 4x4 primed	on request
S004000000512	S 4x5 primed	on request
S004000000612	S 4x6 primed	on request
SS05000000112	S 5x1 primed	on request
S006000000112	S 6x1 primed	<b>8002445</b>
S006000000212	S 6x2 primed	<b>8002459</b>
S006000000312	S 6x3 primed	<b>8002460</b>
S006000000412	S 6x4 primed	<b>8002461</b>
S006000000512	S 6x5 primed	<b>8003694</b>
S006000000612	S 6x6 primed	on request
SS07000000112	S 7x1 primed	on request
S008000000112	S 8x1 primed	<b>8002454</b>
S008000000212	S 8x2 primed	<b>8002462</b>
S008000000312	S 8x3 primed	<b>8002463</b>
S008000000412	S 8x4 primed	<b>8006189</b>
S008000000512	S 8x5 primed	<b>8009168</b>
S008000000612	S 8x6 primed	<b>8009169</b>



**S frame, acid proof stainless steel**

Manufacturer's part number	Description	Order Code
S002000000121	S 2x1 AISI 316	<b>8084896</b>
S002000000221	S 2x2 AISI 316	on request
S002000000321	S 2x3 AISI 316	on request
S002000000421	S 2x4 AISI 316	on request
S004000000121	S 4x1 AISI 316	<b>8002464</b>
S004000000221	S 4x2 AISI 316	on request
S004000000321	S 4x3 AISI 316	on request
S004000000421	S 4x4 AISI 316	on request
S006000000121	S 6x1 AISI 316	<b>8002465</b>
S006000000221	S 6x2 AISI 316	<b>8025754</b>
S006000000321	S 6x3 AISI 316	<b>8025771</b>
S006000000421	S 6x4 AISI 316	on request
S008000000121	S 8x1 AISI 316	<b>8040361</b>
S008000000221	S 8x2 AISI 316	<b>8002466</b>
S008000000321	S 8x3 AISI 316	<b>8004835</b>
S008000000421	S 8x4 AISI 316	<b>8025778</b>

## SF Frames for welding



### SF frame, primed mild steel

Manufacturer's part number	Description	Order Code
SFF2000000112	SF 2x1 primed	<b>8004300</b>
SFF2000000212	SF 2x2 primed	on request
SFF2000000312	SF 2x3 primed	on request
SFF2000000412	SF 2x4 primed	on request
SFF4000000112	SF 4x1 primed	<b>8002615</b>
SFF4000000212	SF 4x2 primed	<b>8020877</b>
SFF4000000312	SF 4x3 primed	on request
SFF4000000412	SF 4x4 primed	on request
SFF6000000112	SF 6x1 primed	<b>8003329</b>
SFF6000000212	SF 6x2 primed	<b>8020879</b>
SFF6000000312	SF 6x3 primed	<b>8020880</b>
SFF6000000412	SF 6x4 primed	<b>8023810</b>
SFF8000000112	SF 8x1 primed	<b>8003001</b>
SFF8000000212	SF 8x2 primed	on request
SFF8000000312	SF 8x3 primed	<b>8020883</b>
SFF8000000412	SF 8x4 primed	<b>8020884</b>



### SF frame, acid proof stainless steel

Manufacturer's part number	Description	Order Code
SFF2000000121	SF 2x1 AISI 316	on request
SFF4000000121	SF 4x1 AISI 316	on request
SFF4000000221	SF 4x2 AISI 316	on request
SFF4000000321	SF 4x3 AISI 316	on request
SFF4000000421	SF 4x4 AISI 316	on request
SFF6000000121	SF 6x1 AISI 316	on request
SFF6000000221	SF 6x2 AISI 316	<b>8019744</b>
SFF6000000321	SF 6x3 AISI 316	on request



Manufacturer's part number	Description	Order Code
SFF6000000421	SF 6x4 AISI 316	on request
SFF8000000121	SF 8x1 AISI 316	on request
SFF8000000221	SF 8x2 AISI 316	on request
SFF8000000321	SF 8x3 AISI 316	on request
SFF8000000421	SF 8x4 AISI 316	on request

## GHM Frames for bolting



**GHM frame, primed mild steel**

Manufacturer's part number	Description	Order Code
GHM2000000112	GHM 2x1 primed	<b>8002353</b>
GHM2000000212	GHM 2x2 primed	on request
GHM2000000312	GHM 2x3 primed	on request
GHM4000000112	GHM 4x1 primed	on request
GHM4000000212	GHM 4x2 primed	on request
GHM4000000312	GHM 4x3 primed	on request
GHM6000000112	GHM 6x1 primed	<b>8003149</b>
GHM6000000212	GHM 6x2 primed	<b>8043807</b>
GHM6000000312	GHM 6x3 primed	<b>8041916</b>



**Roxtec KFO Frame**

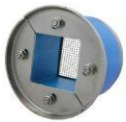
Manufacturer's part number	Description	Order Code
KFO0000060059	Roxtec KFO 6x1 Frame	<b>8066451</b>
CKF0000060059	Roxtec C KFO 6x1 Frame	<b>8072647</b>
KFC0000100011	Roxtec C KFO Counter Frame	<b>8072648</b>

## R Frames



### R frame, galvanized fittings

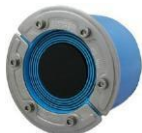
Manufacturer's part number	Description	Order Code
R000001001018	R 100 galv	<b>8001618</b>
R000001251018	R 125 galv	<b>8003527</b>
R000001271018	R 127 galv	on request
R000001501018	R 150 galv	<b>8001620</b>
R000002001018	R 200 galv	<b>8002469</b>



### R frame, acid proof stainless steel

Manufacturer's part number	Description	Order Code
R000000701021	R 70 AISI 316	<b>8002470</b>
R000000751021	R 75 AISI 316	<b>8002565</b>
R000001001021	R 100 AISI 316	<b>8002471</b>
R000001251021	R 125 AISI 316	<b>8003366</b>
R000001271021	R 127 AISI 316	on request
R000001501021	R 150 AISI 316	<b>8002444</b>
R000002001021	R 200 AISI 316	<b>8002472</b>

## RS sealing



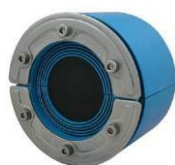
### RS seal, with core, acid proof stainless steel fittings

Manufacturer's part number	Description	Cable dimensions	Order Code
RS00100251023	RS 25 AISI 316	0 - 3.6 - 12.0	8002046
RS00100311023	RS 31 AISI 316	0 - 4.0 - 17.0	8002473
RS00100431023	RS 43 AISI 316	0 - 4.0 - 23.0	8002474
RS00100501023	RS 50 AISI 316	0 - 8.0 - 30.0	8002047
RS00100681023	RS 68 AISI 316	0 - 26.0 - 48.0	8002475
RS00100751023	RS 75 AISI 316	0 - 24.0 - 54.0	8002476
RS00101001023	RS 100 AISI 316	0 - 48.0 - 70.0	8002477
RS00101251023	RS 125 AISI 316	0 - 66.0 - 98.0	on request



### RS seal, without core, acid proof stainless steel fittings

Manufacturer's part number	Description	Cable dimensions	Order Code
RS00001001023	RS 100 AISI 316 woc	0 - 48.0 - 70.0	on request
RS00001251023	RS 125 AISI 316 woc	0 - 26.0 - 98.0	on request
RS00001501023	RS 150 AISI 316 woc	0 - 93.0 - 119.0	on request



### RS OMD seal, with core, acid proof stainless steel fittings

Manufacturer's part number	Description	Cable dimensions	Order Code
RSO0100231021	RS 23/25 OMD AISI 316	0 - 3.6 - 12.0	on request
RSO0100311021	RS 31 OMD AISI 316	0 - 4.0 - 17.0	on request
RSO0100431021	RS 43 OMD AISI 316	0 - 4.0 - 23.0	8002478
RSO0100501021	RS 50 OMD AISI 316	0 - 8.0 - 30.0	on request
RSO0100681021	RS 68 OMD AISI 316	0 - 26.0 - 48.0	on request
5RSO000002964	RS 75 OMD AISI 316,	0 - 24.0 - 54.0	on request
RSO0101001021	RS 100 OMD AISI 316	0 - 48.0 - 70.0	on request
RSO0101251021	RS 125 OMD AISI 316	0 - 66.0 - 98.0	8002479

## Sleeves



### Sleeves, without flange

Manufacturer's part number	Description	Order Code
<b>Primed Mild Steel</b>		
ASL0000250012	SL 25 L=35mm primed	<b>8002480</b>
ASL0000310012	SL 31 L=35mm primed	on request
ASL0000430012	SL 43 L=65mm primed	<b>8002481</b>
ASL0000500012	SL 50 L=65mm primed	<b>8002482</b>
ASL0000680012	SL 68 L=65mm primed	<b>8002483</b>
ASLR000700012	SL 70 L=55mm primed	<b>8003256</b>
ASL0000750012	SL 75 L=65mm primed	<b>8002484</b>
ASL0001000012	SL 100 L=65mm primed	<b>8001619</b>
ASL0001250012	SL 125 L=65mm primed	<b>8002485</b>
ASL0001500012	SL 150 L=65mm primed	<b>8001621</b>
ASLR002000012	SL 200 L=65mm primed	<b>8002486</b>
<b>Acid-proof Stainless Steel</b>		
ASLR102000021	SLR 200 AISI316 L=55mm	<b>8051100</b>



### Sleeves, with flange

Manufacturer's part number	Description	Order Code
<b>Primed Mild Steel</b>		
ASF0000250012	SLF 25 L=35mm primed	<b>8002487</b>
ASF0000310012	SLF 31 L=35mm primed	<b>8002488</b>
ASF0000430012	SLF 43 L=65mm primed	on request
ASF0000500012	SLF 50 L=65mm primed	<b>8002048</b>
ASF0000680012	SLF 68 L=65 mm primed	on request
ASFR000700012	SLF 70 L=55mm primed	<b>8002562</b>
ASF0000750012	SLF 75 L=65mm primed	<b>8002489</b>
ASF0001000012	SLF 100 L=65mm primed	<b>8002490</b>
ASF0001250012	SLF 125 L=65mm primed	<b>8002491</b>

Manufacturer's part number	Description	Order Code
ASF0001500012	SLF 150 L=65mm primed	<b>8002492</b>
ASFR002000012	SLF 200 L=55mm primed	<b>8002493</b>
<b>Acid-proof Stainless Steel</b>		
5ASFR00006186	SLFR 125 AISI316 L=55mm	<b>8055504</b>
5ASFR00006219	SLFR 200 AISI316 L=55mm	<b>8055505</b>

## Roxtec Ezentry



Manufacturer's part number	Description	Order Code
EZ00000000440	Roxtec Ezentry Cable Entry Seals MINI 4/4	<b>8005836</b>
EZ00000000490	Roxtec Ezentry Cable Entry Seals MINI 4/9	<b>8005645</b>
EZ00000000044	Roxtec Ezentry Cable Entry Seals 4/4	<b>8005837</b>
EZ00000001004	Roxtec Ezentry Cable Entry Seals 10/4	on request
EZ00000001007	Roxtec Ezentry Cable Entry Seals 10/7	on request
EZ00000001010	Roxtec Ezentry Cable Entry Seals 10/10	<b>8005838</b>
EZ00000001604	Roxtec Ezentry Cable Entry Seals 16/4	on request
EZ00000001610	Roxtec Ezentry Cable Entry Seals 16/10	<b>8005839</b>
EZ00000001613	Roxtec Ezentry Cable Entry Seals 16/13	<b>8005644</b>
EZ00000001616	Roxtec Ezentry Cable Entry Seals 16/16	<b>8005840</b>
EZ00000002406	Roxtec Ezentry Cable Entry Seals 24/6	on request
EZ000000024015	Roxtec Ezentry Cable Entry Seals 24/15	<b>8005841</b>
EZ00000002406	Roxtec Ezentry Cable Entry Seals 24/24	<b>8005842</b>
EZ00000003208	Roxtec Ezentry Cable Entry Seals 32/08	on request
EZ00000003220	Roxtec Ezentry Cable Entry Seals 32/20	<b>8005843</b>
EZ00000003232	Roxtec Ezentry Cable Entry Seals 32/32	<b>8005844</b>
EZ00000000440	Roxtec Ezentry Cable Entry Seals MINI 4/4	<b>8005836</b>
EZ00000000490	Roxtec Ezentry Cable Entry Seals MINI 4/9	<b>8005645</b>

## Installation/ Disassembly tools

### Pre-compression tools



Pre-compression tool, small,  
for regular frames in all sizes



Pre-compression tool, large,  
for regular frames in all sizes

The pre-compression tools, small and large, help compressing installed modules and stayplates to make more room for the Roxtec Wedge. During installation, they also help keeping the items in place.

Manufacturer's part number	Description	Order Code
5ICT000001269	Pre-compression tool, small	<b>8003812</b>
ICT0001000000	Pre-compression tool, large	<b>8002452</b>

### Stayplate clip



Stayplate clip for use with RM stayplates, width 120 mm, 4.724”.

Manufacturer's part number	Description	Order Code
ICT0001000200	Roxtec Stayplate Clip 120mm	<b>8040368</b>